



Kea

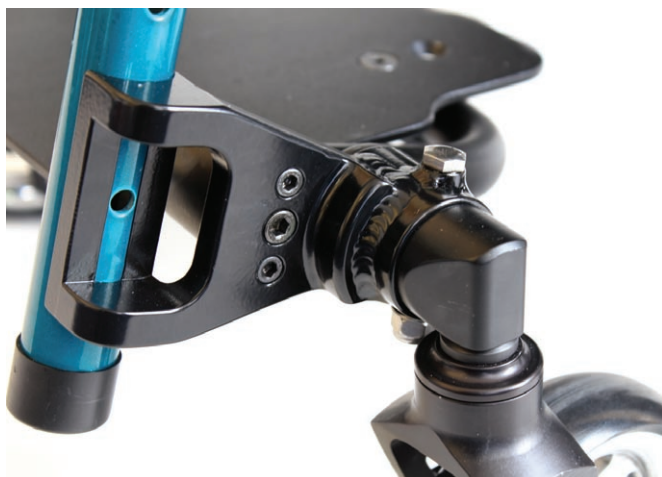
childrens
growable
wheelchair

CHILDRENS GROWABLE DAY CHAIR

The Melrose Kea is a lightweight aluminium wheelchair that is nice and compact with no under-frame.

Although it is custom built to the child's specifications, we allow room for the wheelchair to grow several inches in length, width and height. This allows the wheelchair to be used for longer as the child grows.

The adjustability also lets you alter the centre of gravity and seat height allowing users to alter their positioning as they get older and more confident.



A new castor positioning matrix allows adjustment in the wheelchair height, the castor pivot angle and the footplate height, the footplate is also angle adjustable.

KEA

STANDARD SPECIFICATIONS

- Growable Aluminum frame
- Adjustable back height and angle
- Fixed or folding back
- Adjustable height and angle footplate
- Adjustable seat height
- Adjustable camber bar position
- Adjustable balance point
- Castors: rollerblade
4", 5" solid composite
4", 5" wide solid composite
- Quick release spoked wheels on alloy rims 18", 20", 22"
- Hard anodised push rims
- Tyres high pressure tread or smooth
- Push to lock brakes
- Black fabric sling and back with leather trim
- Five-year frame warranty

OPTIONS AND ACCESSORIES

- Growable Titanium frame
- Castors: 4", 5" solid alloy
3", 4", 5" soft roll alloy
- Wheels: Composite wheels
BMX wheels
Spinergy wheels
X Core wheels
- Pushrims: Rubber coated - Red or Black
Vinyl
Foam
- Spoke guards - clear or black
- Removeable stroller push handles
- Brakes: Hill climber brakes
Superlock brakes
Sissor brakes
D-lock brakes
Brake extension levers
- Anti-tips with plastic wheels or rollerblades
- Armrest: Desk or full length pad
- adjustable height, with/without skirt guards
- Adjustable back upholstery
- Leg strap
- Fabric skirt guards
- ABS skirt guards or fabric covered ABS skirt guards
- Cushion
- Fabric footplate cover
- Impact guards, castor covers

